

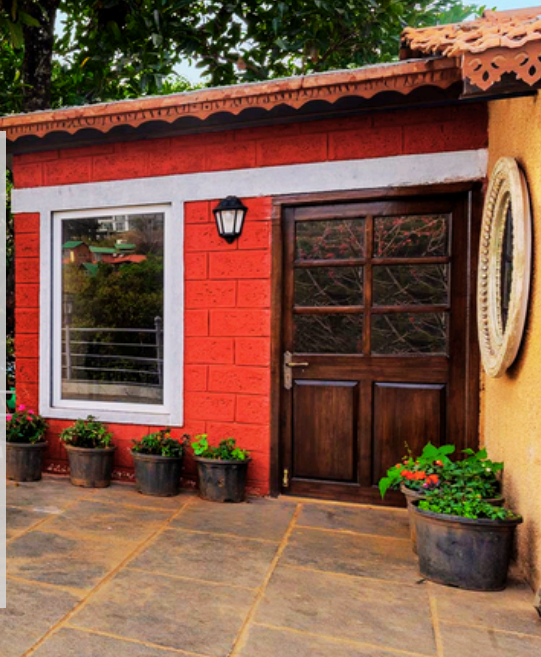


TREE HOUSE

TREE HOUSE | 2BHK | PANCHGHANI



EXPLORING TREE HOUSE



01

Tour-rific Time

Fantastic experience exploring the villa.

02

snug sheets to splashy retreats

Villa that offers a magical escape.

03

Vibin' to the Nineties

Feeling nostalgic and happy.

04

Jewels of Panchgani tucked away in nature

Find your next favorite spot'

05

Don't be a party crasher—follow the villa rules!

Let's keep the villa pristine!

06

Menu-Masterpieces

menu that is a work of culinary art.

07

Now or Never

Don't miss out on this opportunity.

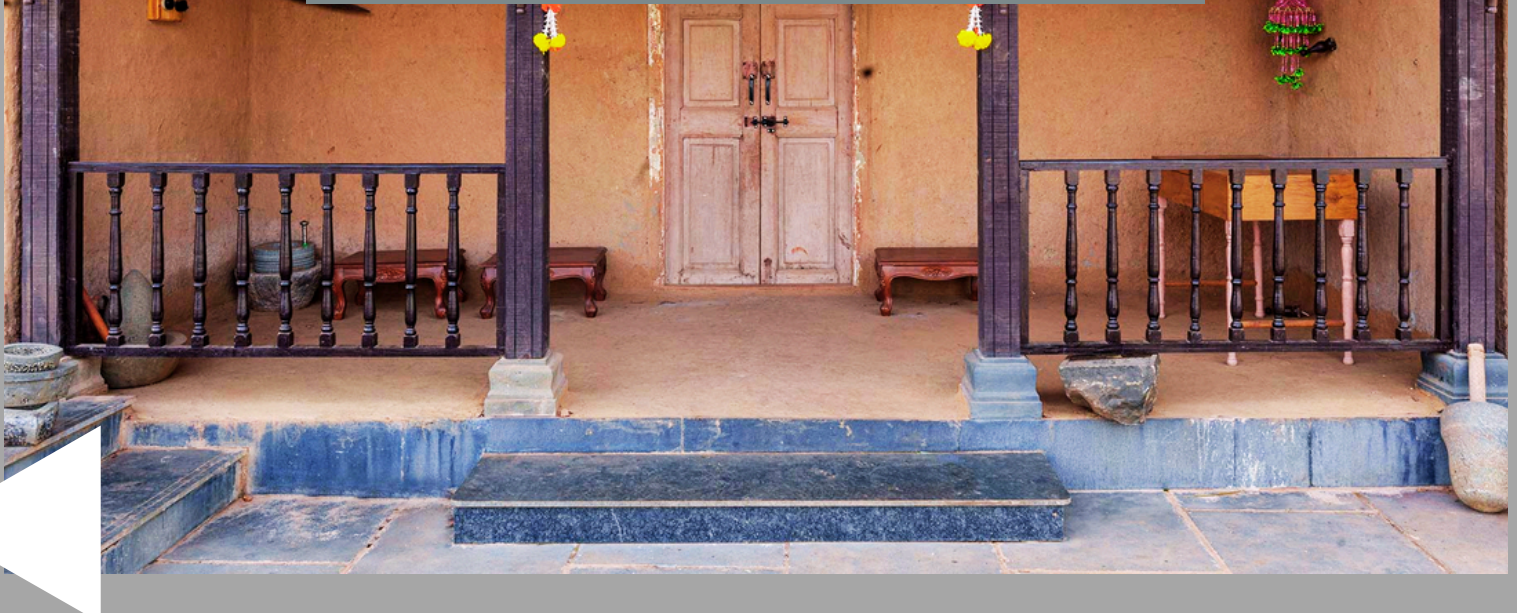
08

Locate the location.

Find out where the villa is.

TOUR-RIFIC TIME

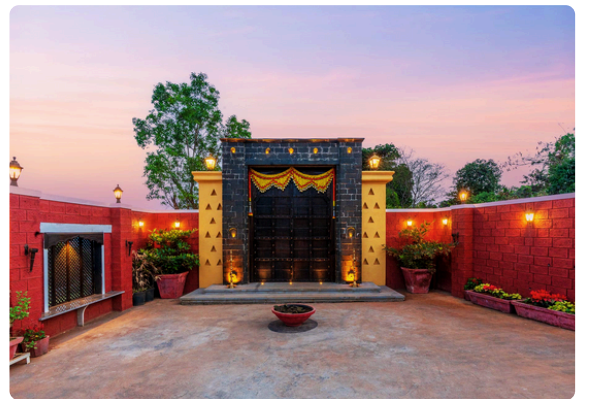
*FANTASTIC EXPERIENCE EXPLORING
THE VILLA.*



The Tree House 2BHK, a secluded haven nestled amidst lush forests, offers an exquisite blend of luxury, convenience, and breathtaking vistas. Perched atop a hill, this villa provides panoramic views of the verdant landscape below, creating a serene and enchanting atmosphere.


With its strategic location near local attractions, The Tree House ensures easy access to the area while maintaining a tranquil ambiance. The villa boasts a range of amenities, including high-speed Wi-Fi, ample parking, a safety deposit box, laundry services, a mini-fridge, a microwave, and essential bathroom amenities. For outdoor enthusiasts, the private garden, outdoor seating, and barbecue area offer ample opportunities for relaxation and entertainment.

A dedicated team of housekeeping staff and an in-house chef ensures that every guest's needs are met, providing personalized care and gourmet dining experiences. The Tree House 2BHK offers a truly memorable experience. Whether you seek adventure, relaxation, or simply a peaceful retreat, this villa provides the perfect escape amidst nature's beauty.




SNUG SHEETS TO SPLASHY RETREATS

Villa that offers a magical escape.

 2 Bedrooms

 2 Bathrooms

 1 living room

 1 Swimming Pool

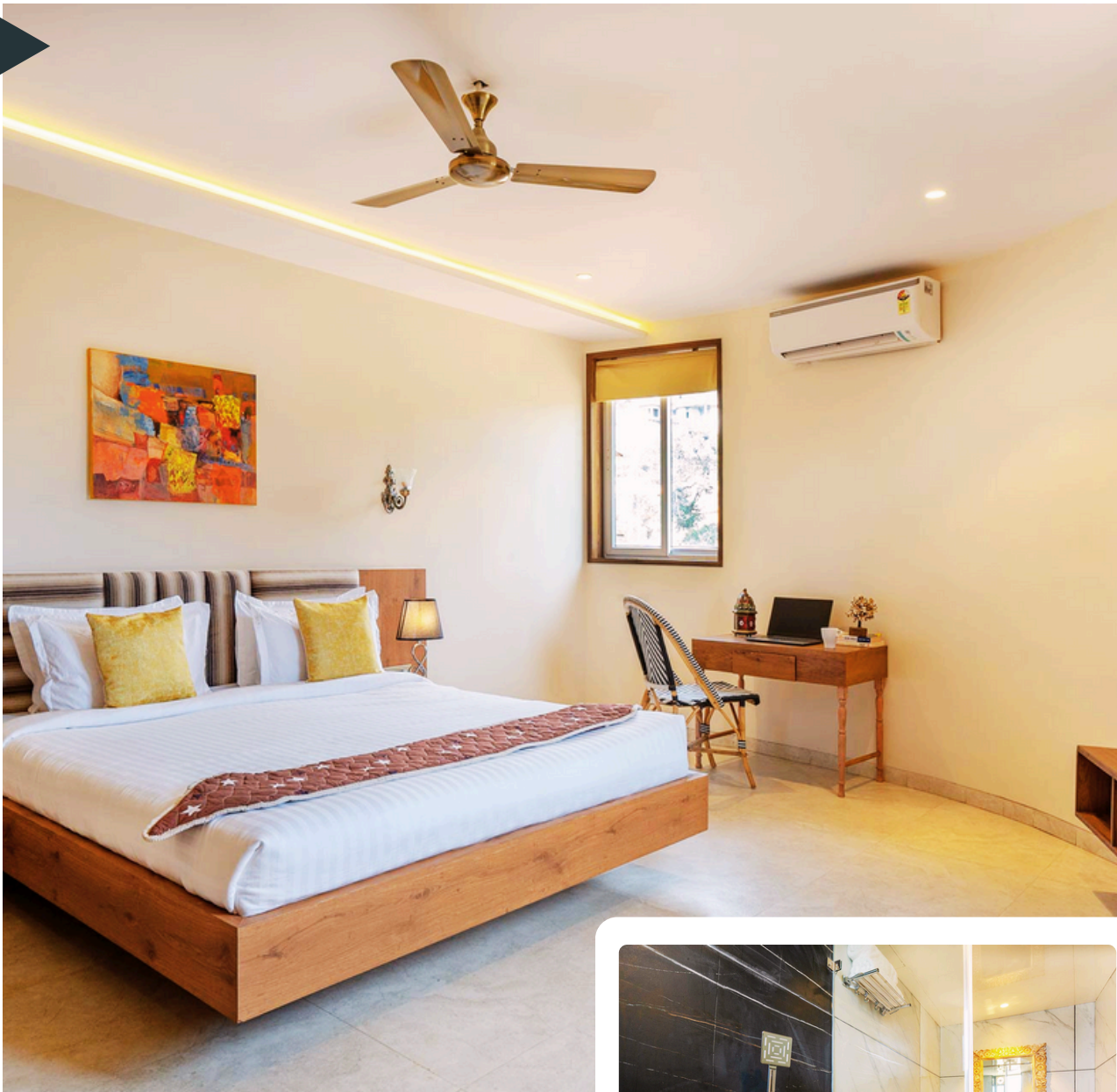
 Kitchen

4-6 OCCUPANCY



BEDROOM 1

The master suite, Bedroom 1, offers a luxurious retreat with a TV, panoramic views, plush seating, and a table.



BEDROOM 2

Bedroom 2's balcony offers breathtaking views, while the cozy side table, ample wardrobe, and ensuite bathroom provide all the comforts of home.

KITCHEN AND DINING AREA

KITCHEN

The kitchen at Tree House is a fusion of old and new, featuring both a traditional chulha and a modern clay stove.

DINING AREA

Dine amidst nature's beauty on our treehouse terrace, featuring a secluded and tranquil setting with panoramic views.





POOL

The pool at Tree House is complemented by a stylish seating area, offering a perfect spot to unwind and soak up the tranquil surroundings.



GARDEN

The garden at Tree House features a charming fountain surrounded by a sitting area, creating a serene oasis for relaxation.



TERRACE

The terrace at Tree House is a delightful escape, featuring a swing that invites you to relax while taking in the breathtaking views.

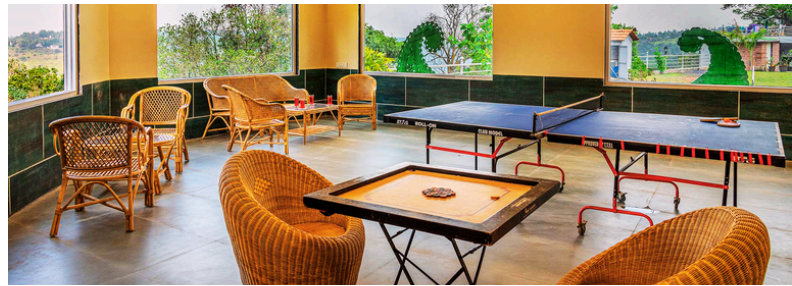


**JEWELS OF
PANCHGANI TUCKED
AWAY IN NATURE**

**FIND YOUR NEXT
FAVORITE SPOT**

- Panchgani market - 5km
- Tableland - 5km
- Parsi point - 4km
- Mapro garden - 4 km
- Venna lake - 10km
- Mahabaleshwar - 14km





VIBIN' TO THE NINETIES

Feeling nostalgic and happy.



Wifi



Toiletries



Parking Area



Indoor games



Bonfire



Caretaker



Power back up

Don't be a *party crasher*—follow the villa rules!


Let's keep the villa pristine!

- All Guests must carry government approved Original ID proof.
 - Indoor smoking (inside rooms, toilets & lobby) is strictly prohibited.
 - No Smoking and Hookah allowed : Smoking & Hookah is strictly prohibited inside the property.
 - Designated smoking areas are provided outside.
 - Pet Policy: Pets are not allowed on the premises.
 - Guests: Only registered guests are allowed on the property. Visitors must be approved in advance.
 - Kitchen Use: Feel free to use the kitchen, but please clean up after yourself. Ensure all dishes are washed, and appliances are turned off.
 - Damage and Loss: Guests are responsible for any damage to the property or loss of items.
 - Report any issues immediately to management.
 - Security: Always lock doors and windows when leaving the property. Management is not liable for lost or stolen items.
 - Caretaker timing is 8:00 AM to 10 PM
 - Exceptions are made only with prior approval and may incur additional fees.
-



NOW OR NEVER

Don't miss out on this opportunity.

 **+91-9103694137**

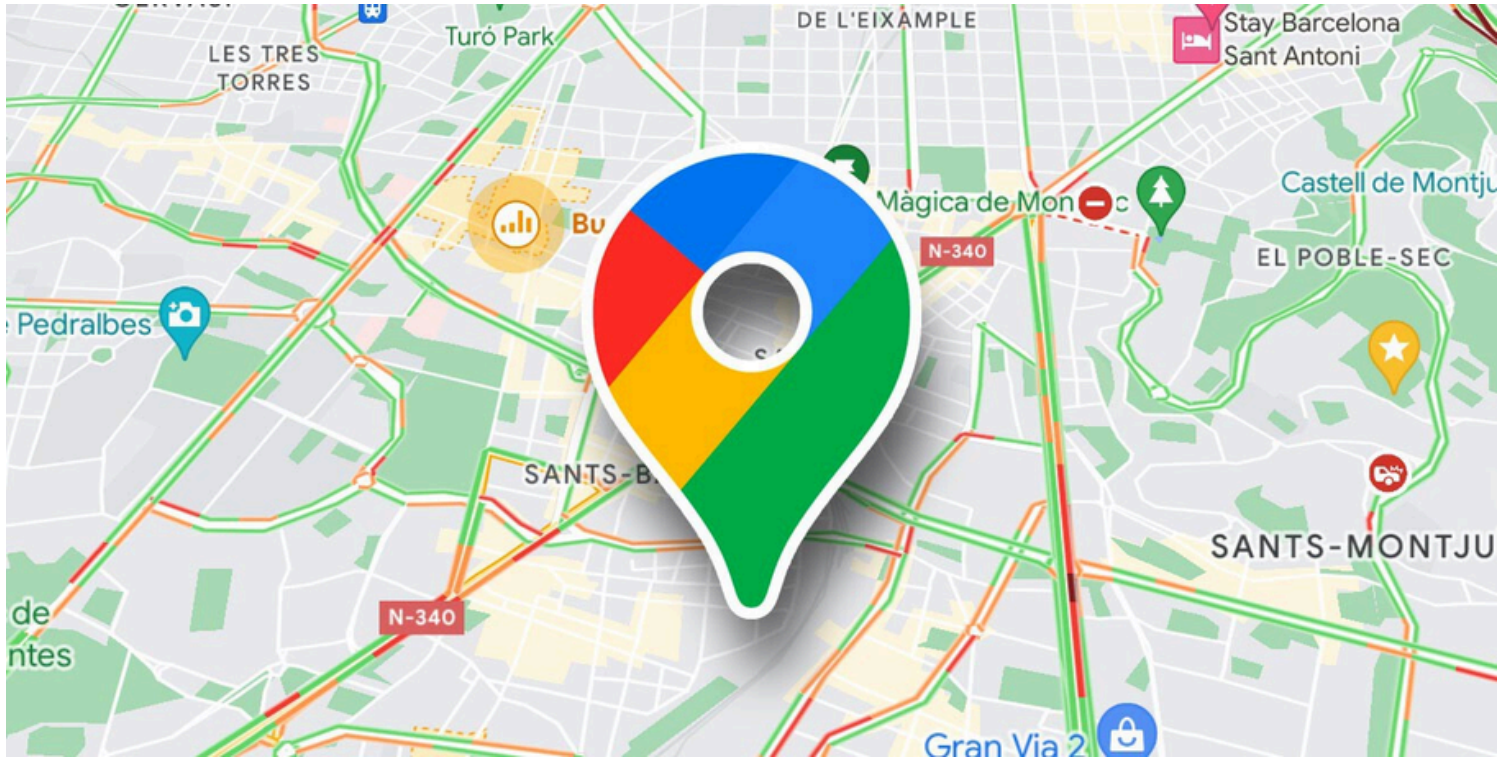
Book now for a fun-filled getaway.

BOOK NOW



Locate the location.

Find out where the villa is...



Nearest railway station: Satara - 48 km

<https://maps.app.goo.gl/p7W8hnKUKA8CGhHB9>

GET LOCATION