



LAWN HOUSE

LAWN HOUSE | 2BHK | PANCHGANI





EXPLORING LAWN HOUSE

01

Tour-ist Attraction

A must-see destination within the villa.

02

Pool-Side to Pillow-Time

A tour of relaxation and comfort.

03

Vibin' with the Vibe

Connecting with positive energy.

04

Explore the gems.

That make Panchgani truly shine!

05

Keep calm and cabin on.

Respect the villa vibe!

06

Menu-Mastery

The chef's expertise.

07

Book-It-Before-You-Croak

Your vacation before it's too late.

08

Location, Location, Lucky

A big difference.

TOUR-IST ATTRACTION

A MUST-SEE DESTINATION WITHIN THE
VILLA.



A must-see destination within the villa.

Lawn House 2BHK, nestled in a serene valley, offers a luxurious retreat amidst breathtaking mountain vistas.


The expansive property features a swimming pool, fitness center, and ample outdoor spaces for relaxation. Inside, guests can enjoy modern amenities like high-speed Wi-Fi, laundry facilities, and a well-equipped kitchen.


With a dedicated team of staff, including a caretaker family and in-house chef, Lawn House ensures a comfortable and memorable stay. The villa can accommodate up to 6 guests, making it ideal for families or groups. Whether you seek adventure, relaxation, or a blend of both, Lawn House 2BHK provides an idyllic escape.




POOL-SIDE TO PILLOW-TIME

A tour of relaxation and comfort.

 2 Bedrooms

 2 Bathrooms

 1 living room

 1 Swimming Pool

 Kitchen

4-6 ADULTS



BEDROOM 1

The master suite, Bedroom 1, has panoramic views, plush seating, and a table. offers a luxurious retreat with a TV.



BEDROOM 2

Bedroom 2's balcony offers breathtaking views, , the en-suite bathroom provides all the comforts of home. While the cozy side table, ample wardrobe

KITCHEN AND DINING AREA

KITCHEN

The kitchen features both a traditional chulha and a modern clay stove. Lawn House is a fusion of old and new.

DINING AREA

Dine amidst nature's beauty on our terrace, featuring a secluded and tranquil setting with panoramic views and an indoor 4-seater dining table.





POOL

The pool at Lawn House is complemented by a stylish seating area, offering a perfect spot to unwind and soak up the tranquil surroundings.



GARDEN

The garden at Lawn House features a charming fountain surrounded by a sitting area, creating a serene oasis for relaxation.



TERRACE

The terrace at Lawn House is a delightful escape, featuring a swing that invites you to relax while taking in the breathtaking views.

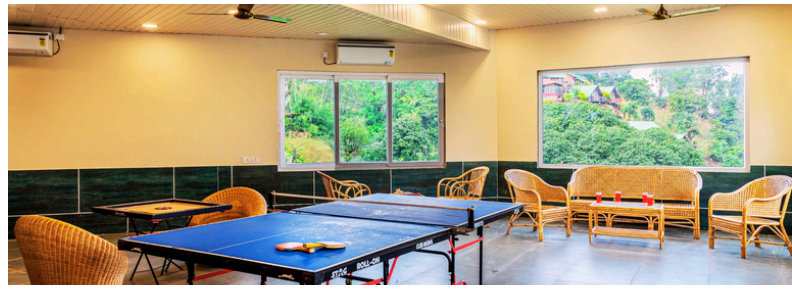


**EXPLORE THE
GEMS.**

**THAT MAKE
PANCHGANI
TRULY SHINE!**

- Panchgani market - 5km
- Tableland - 5km
- Parsi point - 4km
- Mapro garden - 4 km
- Venna Lake - 10km
- Mahabaleshwar - 14km





VIBIN' WITH THE VIBE

Connecting with positive energy.



Wifi



Toiletries



Parking Area



Indoor games



Bonfire



Caretaker



Power back up

KEEP CALM AND CABIN ON.


Respect the villa vibe!

- All Guests must carry government approved Original ID proof.
 - Indoor smoking (inside rooms, toilets & lobby) is strictly prohibited.
 - No Smoking and Hookah allowed : Smoking & Hookah is strictly prohibited inside the property.
 - Designated smoking areas are provided outside.
 - Pet Policy: Pets are not allowed on the premises.
 - Guests: Only registered guests are allowed on the property. Visitors must be approved in advance.
 - Kitchen Use: Feel free to use the kitchen, but please clean up after yourself. Ensure all dishes are washed, and appliances are turned off.
 - Damage and Loss: Guests are responsible for any damage to the property or loss of items.
 - Report any issues immediately to management.
 - Security: Always lock doors and windows when leaving the property. Management is not liable for lost or stolen items.
 - Caretaker timing is 8:00 AM to 10 PM
 - Exceptions are made only with prior approval and may incur additional fees.
-



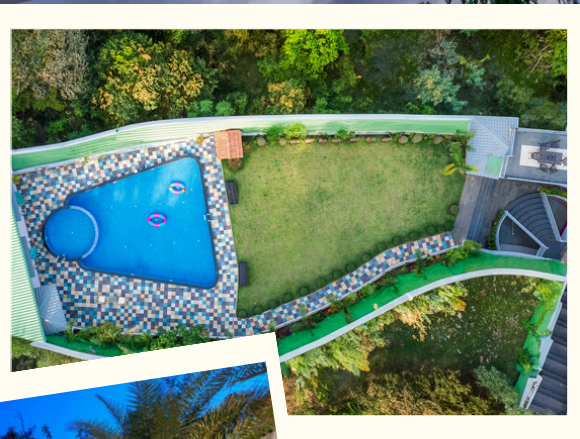
BOOK-IT-BEFORE-YOU-CROAK

YOUR VACATION BEFORE IT'S TOO LATE.

 **+91-9103694137**

Book now for a fun-filled getaway.

BOOK NOW



Location, Location, Lucky

A big difference



Nearest railway station: Satara - 48 km

<https://maps.app.goo.gl/p7W8hnKUKA8CGhHB9>

GET LOCATION